

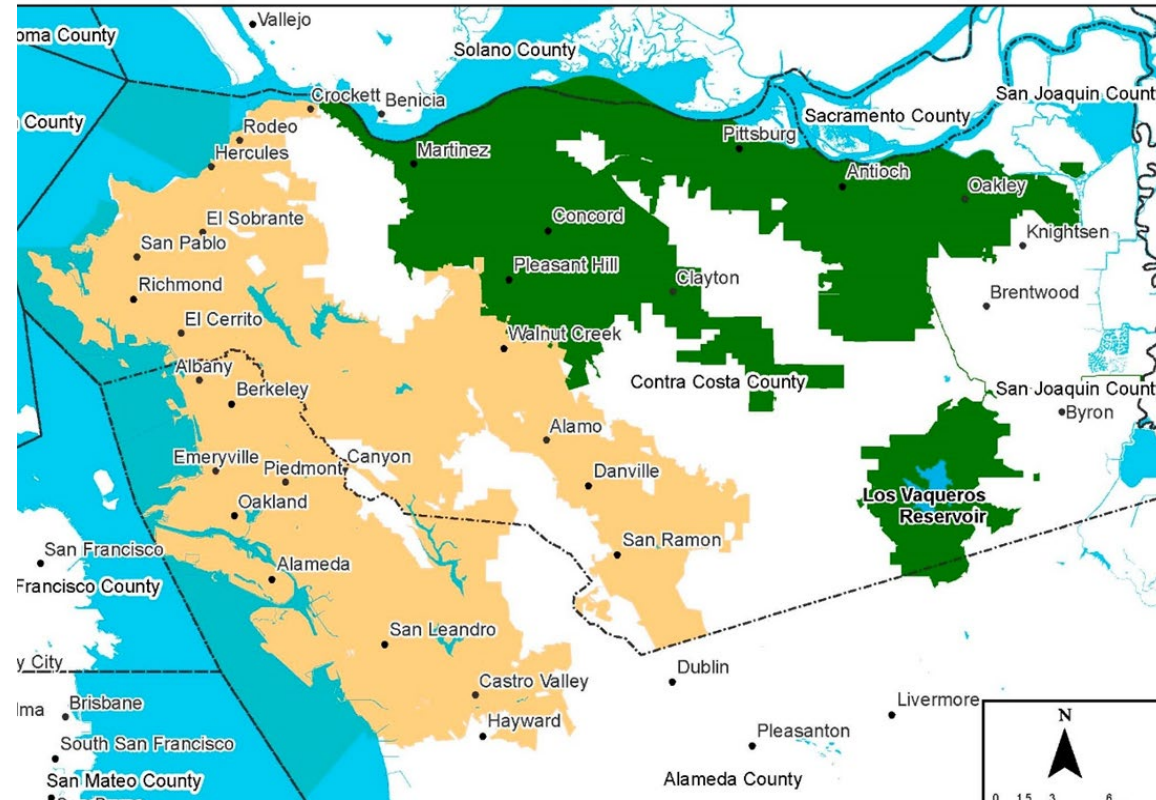
BOMA OAKLAND/ EAST BAY

June 9, 2022 | Bob Eagle
beagle@ccwater.com



CCWD & EBMUD

- Special District
- Serving 500,000
- Central and Eastern Contra Costa County
- Water Wholesaler and Retailer



LOCAL WATER SUPPLY



CCWD DROUGHT PROGRAM

15% Reduction

- 25% Irrigation Accounts
- 10% Multifamily Accounts
- 5% Commercial Accounts

Drought Surcharge

- 15% Decision on June 15
- July 1st Start
- \$0.79 per HCF (748 gal)

ccwater.com/drought
925-688-8000



CCWD DROUGHT PROGRAM

Wasteful Water Use Prohibitions

- Failure to repair a leak
- Causing excess water run-off
- Watering during and up to 48 hours after rainfall
- Watering between 9 a.m. and 5 p.m.
- Washing hardscapes
- Using potable water in a non re-circulating fountain
- Irrigating turf in public street medians with potable water
- State ban on watering of non-functional turf in *non-residential* sites starts June 10th.

NON-FUNCTIONAL TURF

What

- Turf that is not used for recreation or other community purposes
- Turf not in front of Individual homes within an HOA or apartment complex

Where

- Commercial, Industrial and Institutional Sites
- Multifamily common areas

Exemptions

- Appropriately irrigated **trees and other perennial landscape** in turf areas

APPROPRIATE IRRIGATION

Turf

- 0 days for Non-functional turf
- 1-2 days a month for trees in turf areas



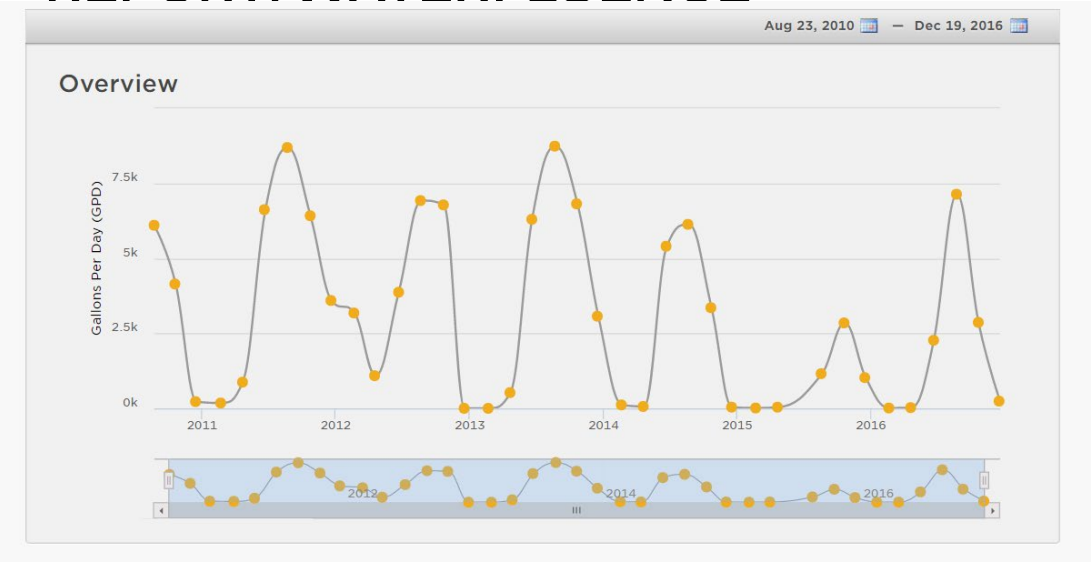
Other Landscape

- Take a day off

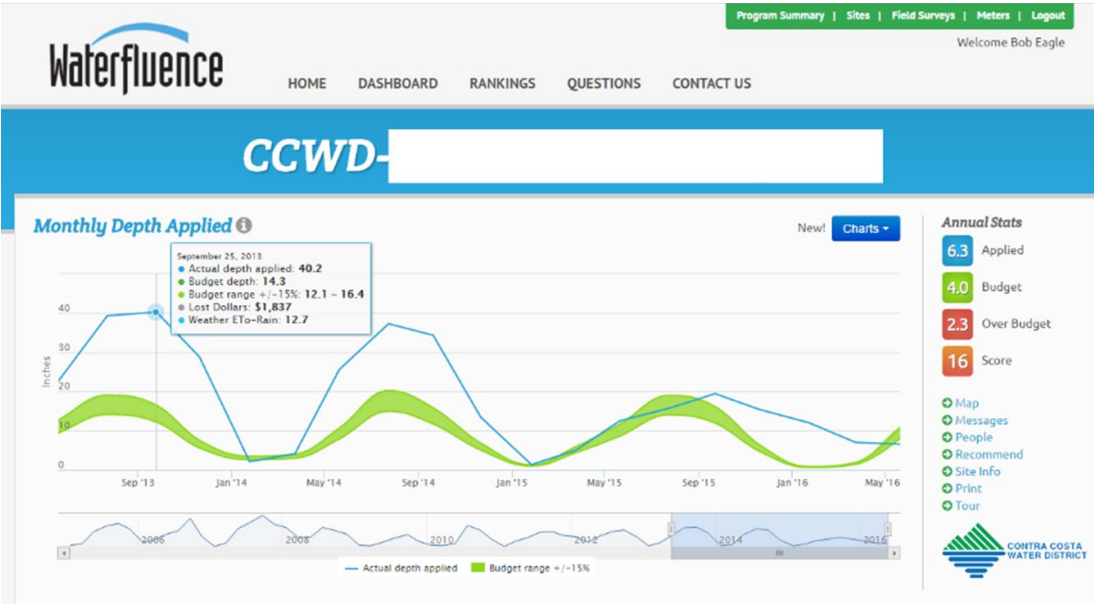
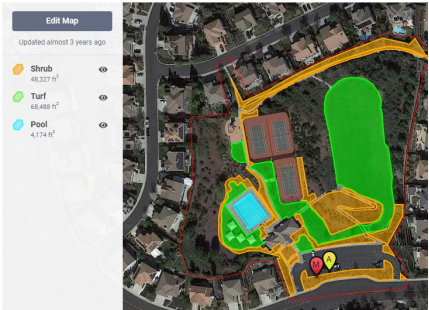
Keep Trees Alive



MY WATER REPORT/WATERFLUENCE



Irrigation Map ①



RESIDENTIAL REBATES & COUPONS

Rebates

- Smart Irrigation Controllers
- Flume
- Lawn to Garden



Coupons

- Mulch

ccwater.com/rebates

LAWN TO GARDEN REBATE

- Receive a rebate of up to \$20,000 (\$1 per sq. ft.) for replacing your existing publicly accessible lawn with water-wise landscaping.
- Pre-approval required


ccwater.com/rebates



GARDENING IN CONTRA COSTA COUNTY

[Home](#) [Gardens](#) [Plants](#) [My List](#) [Resources](#) [Watering Guide](#) 2 of 20 [◀ Prev](#) [Next ▶](#)

Hotlinks: ☒ ON Tour: Cricket Patch ADD



Designer: Cricket Riley Meandering Through The Patch Photographer: Vicki Anderson

Soils and Compost:
Physical weed control, including mulching, or hand removal protects the watershed from harmful chemicals.

Water Saving Tip:
Check your irrigation controller once a month, and adjust as necessary.

Most plants require only one-third as much water in winter as they do in summer.

Integrated Pest Management:
Drip and other smart irrigation delivers water directly to roots, allowing no excess water for weeds.

GARDENING IN CONTRA COSTA COUNTY

[Home](#) [Gardens](#) [Plants](#) [My List](#) [Resources](#) [Watering Guide](#)

